


AGENDA PLACEMENT FORM

(Submission Deadline – Monday, 5:00 PM before Regular Court Meetings)

Date: 12/26/2025
Meeting Date: 1/12/2026
Submitted By: CJO
Department: _____
Signature of Elected Official/Department Head:

Court Decision: <small>This section to be completed by County Judge's Office</small>


Description:
Acknowledge Receipt of Notification from Cleburne State Park of Updated
Prescribed burns at the Cleburne State Park located at 5800 Park Road 21,
Cleburne Texs 76033 between January 2026 and April 2026.

(May attach additional sheets if necessary)

Person to Present: _____
(Presenter must be present for the item unless the item is on the Consent Agenda)

Supporting Documentation: (check one) PUBLIC CONFIDENTIAL
(PUBLIC documentation may be made available to the public prior to the Meeting)

Estimated Length of Presentation: _____ minutes

Session Requested: (check one)
 Action Item Consent Workshop Executive Other _____

Check All Departments That Have Been Notified:
 County Attorney IT Purchasing Auditor
 Personnel Development Services Facilities Management

Other Department/Official (list) _____

**Please List All External Persons Who Need a Copy of Signed Documents
In Your Submission Email**

12/12/2025



The Honorable Christopher Boedeker
County Judge
Johnson County
2 N. Main Street
Cleburne, TX 76033

Life's better outside.®

Dear Judge Boedeker:

CONTINUATION – We were unable to accomplish planned prescribed burns at Cleburne State Park during our initial target timeframe. To keep you informed and in compliance with §11.354 Parks and Wildlife Code, we are notifying you that the Department still intends to conduct one or more prescribed burns at this site.

Our new target timeframe for these burns is between January 2026 and April 2026. However, burn opportunities are dependent on weather, vegetation conditions, current and expected fire danger, and many other considerations. These areas identified for burning may be burned up to April 2026. If we are unable to conduct these burns within this target timeframe we will notify you of the next potential timeframe.

A site-specific Fire Management Plan for prescribed burning operations at Cleburne State Park is in place and we will be happy to share a copy with your office if you desire. In addition, neighboring landowners have been notified of the Department's intentions with the attached letter and map. To reach the community at large, a public notice will be published in the Cleburne Times-Review prior to this burn period.

Additional community outreach on the upcoming burn may include information posted on the Department's website and social media outlets.

Advance notifications have also been made to other state and local officials, nearby water utility officials, and owners of any utility infrastructure within the prescribed burn area. Prior to ignition of any fires, city or county emergency services dispatch center, local area fire departments, and the Texas Commission on Environmental Quality will be notified to ensure they are aware of these actions.

Please contact Angela Bright at (817) 774-1173 or angela.bright@tpwd.texas.gov if you have any questions regarding the planned burn or notifications.

Sincerely,

Angela Bright
Assistant Park Superintendent
Cleburne State Park
5800 Park Road 21
Cleburne, TX 76033
(817) 645-4215

To find out more about the TPWD Wildland Fire Management visit our website, http://tpwd.texas.gov/landwater/land/wildland_fire_management/

Attachments: Landowner Notification Letter
Landowner Notification Map

4200 SMITH SCHOOL ROAD
AUSTIN, TEXAS 78744-3291
512.389.4800

www.tpwd.texas.gov

To manage and conserve the natural and cultural resources of Texas and to provide hunting, fishing and outdoor recreation opportunities for the use and enjoyment of present and future generations.

12/12/2025



Life's better outside.®

Commissioners

Paul L. Foster
Chairman
El Paso

Oliver J. Bell
Vice-Chairman
Cleveland

Wm. Leslie Doggett
Houston

Anna B. Galo
Laredo

John A. McCall, Jr., O.D.
Grapeland

Robert L. "Bobby" Patton, Jr.
Fort Worth

Travis B. "Blake" Rowling
Dallas

Dick Scott
Wimberley

Timothy "Tim" Timmerman
Austin

Lee M. Bass
Chairman-Emeritus
Fort Worth

T. Dan Friedkin
Chairman-Emeritus
Houston

David Yoskowitz, Ph.D.
Executive Director

Dear Cleburne State Park Neighbor:

The Texas Parks and Wildlife Department is planning to conduct prescribed burns in Cleburne State Park at 5800 Park Road 21.

CONTINUATION – We were unable to accomplish planned prescribed burns during our initial target timeframe. Our new target timeframe for these burns is between January 2026 and April 2026. However, burn opportunities are dependent on weather, vegetation conditions, current and expected fire danger, and many other considerations. The areas identified for burning may be burned through April 2026. If we are unable to conduct these burns within this target timeframe, we will notify you of the next potential timeframe.

During the burn, you may see smoke in your neighborhood or on nearby roads. We caution you to reduce your speed and use your low-beam headlights when smoke is present. Other recommended precautions prior to the burn include relocating hay, woodpiles, pets, livestock, and equipment away from park boundary fences and providing defensible space around structures adjacent to park property.

Prescribed burns are a management tool used to restore forest and prairie habitats that were periodically burned by natural fires. Prescribed burns also reduce the potential damage a wildfire could cause by reducing available fuels such as dead trees, leaf litter and other flammable vegetation on the landscape. Prescribed fires on state parks are conducted by Texas Parks and Wildlife Department personnel who have undergone extensive fire training and meet national wildland firefighting and incident management standards. Additionally, the state park staff will work with local fire and emergency management officials to plan and conduct the prescribed fire.

Each prescribed fire plan defines the local weather and other conditions under which a prescribed burn may be conducted, the personnel and equipment required, and fire-break locations. Most importantly, the fire plan prioritizes public and firefighter safety. The plan reduces the risk of fire escaping onto adjacent properties and minimizes the effect of smoke in nearby residential and smoke sensitive areas. The plan also establishes contingency measures to protect adjacent properties if the fire were to escape established boundaries. The prescribed burns are ignited by hand in predetermined patterns that ensure the best measures for containment.

Texas has a history of naturally occurring wildfires, making prescribed burns very important to maintaining habitats on state parks. Private landowners should consider implementing wildfire mitigation efforts on their lands as well to preserve their property and way of life before a wildfire event starts. Information on how to be prepared can be found at: www.FIREWISE.org.

Please contact Angela Bright at 817-774-1173 or email at angela.bright@tpwd.texas.gov if you have any questions regarding the planned burn or notifications. Thank you for your support and understanding of this valuable and necessary habitat management and fuel reduction tool.

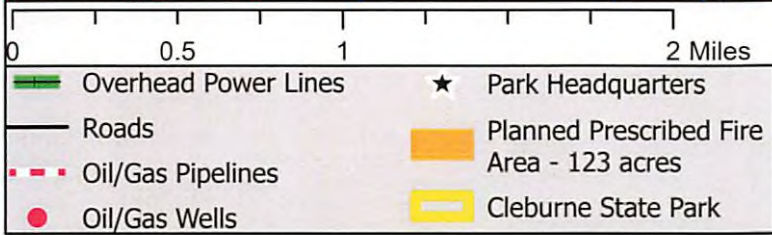
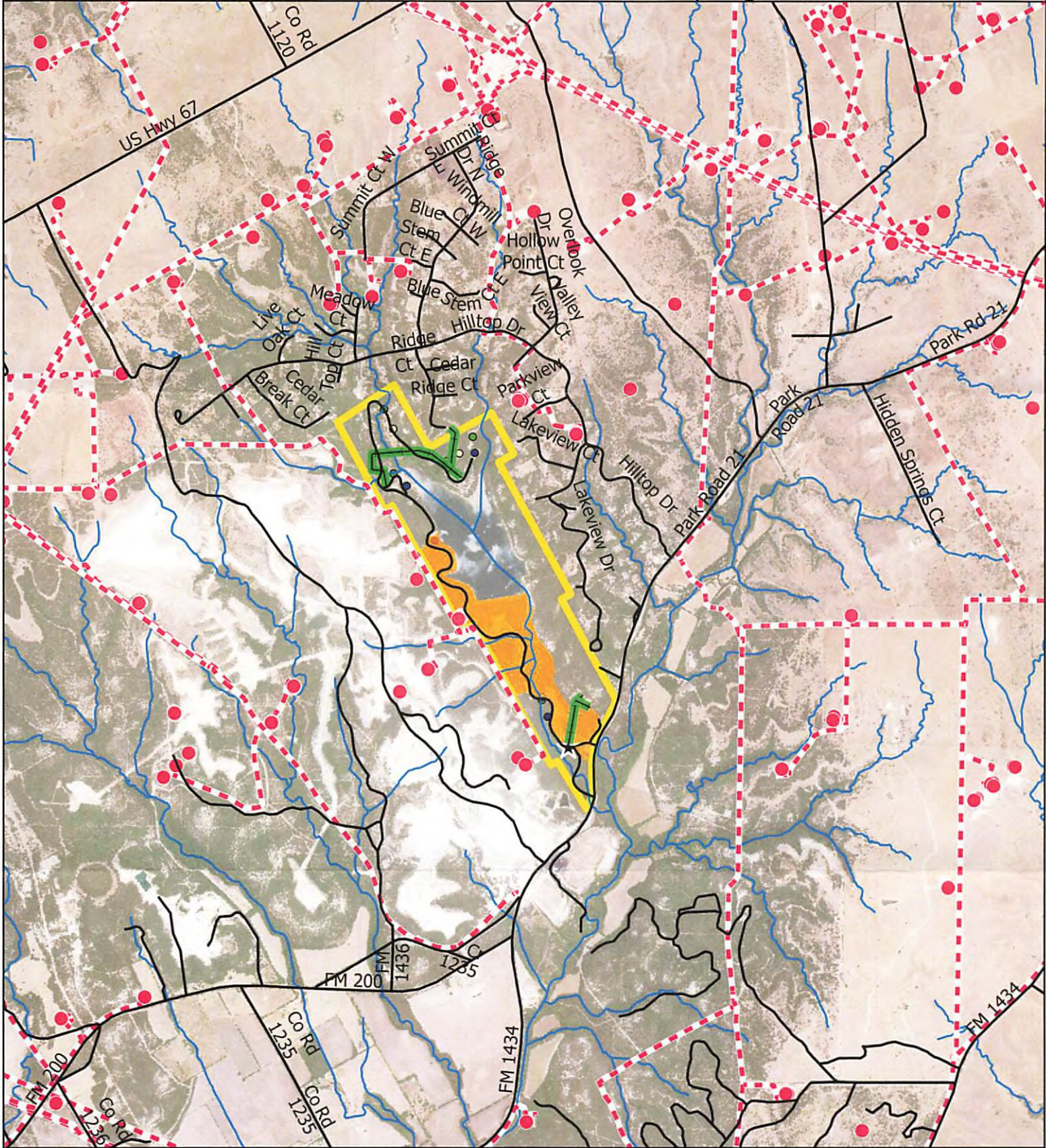
Sincerely,

Angela Bright
Assistant Park Superintendent
Cleburne State Park
5800 Park Road 21
817-645-4215

Attachment: Landowner Notification Map

To manage and conserve the natural and cultural resources of Texas and to provide hunting, fishing and outdoor recreation opportunities for the use and enjoyment of present and future generations.

Cleburne State Park, Johnson County: Prescribed Fire Notice - Fall 2025 - Spring 2026



Map ID: Cleburne State Park_
RX-Public Notice - FY2025
Imagery NAIP 2022 - UTM z15 NAD83
Maps are for planning purposes only.
No claims to accuracy are made or implied.
Road data from US Census TIGER.
Pipeline and well data from
the Texas Railroad Commission.

